



Camp Caregiver Guide 2026

Dear Riverbend camp families,

Welcome to Riverbend's 2026 Nature Camp at McKaig Nature Center! Summer Camp has many benefits for children, including increased confidence, building relationships, improved environmental literacy and of course, memories to last a lifetime. We offer a child-driven, immersive experience in nature where children are free to explore, learn and experience the world in a safe environment. Our counselors are trained in inquiry-based science teaching methods, first aid and natural science.

We are looking forward to a great year for our campers and families. This guide is designed to help you prepare for your summer experience at McKaig.

If you have any questions please contact us, camps@riverbendeec.org

See you this summer!

Table of Contents

Camp Parent Guide 2026	1
Table of Contents	2
Where is McKaig Located?	3
Registration Policies	3
Drop-off and Pick-up	3
What to Wear and Bring	4
Food: Lunch and Snacks	4
Camper Medications	5
Riverbend Behavior Policy	5
Additional Information	6
Day Camp Week-at-a-Glance	8
Contact Riverbend	9
About Riverbend	9

Where is McKaig Located?

Address: 889 Croton Rd, Wayne, PA 19087

McKaig Nature Center is located on Croton Road, next to Roberts Elementary School. The home base for camp is located at the Old Roberts Schoolhouse right in front of Roberts Elementary. We are easily accessible from I-76, RT 202 and I-476.

Registration Policies

- **Camp Balances** must be paid in full by **May 15, 2026**. Any unpaid balances will be charged a \$100 late fee and subject to cancellation.
 - Please note: Tuition balances are automatically set to auto-bill May 15, 2026. This can be changed when registering.
- **Schedule Changes** will be accommodated to the best of Riverbend's ability. However, many weeks are full by summer and changes may not be possible.
- **Cancellations/Refunds:** A **non-refundable** \$100 per-week, per-camper deposit is due at the time of booking.
- **Full tuition is due and becomes non-refundable on May 15, 2026.** If cancellations are made after May 15 NO REFUND may be given.

Drop-off and Pick-up

Regular Camp Day 8:45 am — 3:15 pm

Car Line Procedure:

Caregivers; please do not park or exit your vehicle during drop off and pick up. Thank you for helping us keep the carline running smoothly!

For daily drop-off and pick-up, we use a car line. When you arrive in the morning there will be a Riverbend staff person directing traffic through Robert's Elementary parking lot.

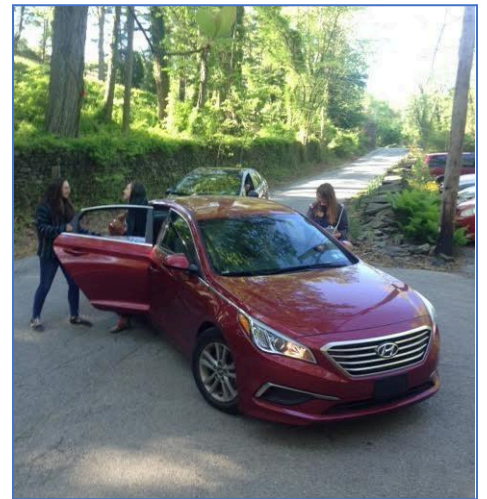
The Riverbend staff person will greet you to check in your camper(s).

When clear, the staff person will help your camper(s) out of your vehicle.

In the afternoon, a staff person will greet you to check out your camper(s). You will be asked to present a picture ID (driver's license or passport) and your camper will be walked to your car.

Please note:

- **Late Drop-off (after 9:15) or Early Pick-up (before 3:15)**
 - All late drop-offs and early pick-ups must call Riverbend's Main Office: 610-527-5234 x 119. You will wait with your camper at the School House located to the right of the



parking lot. Please let us know in advance if you are picking up early so that we can make sure your camper is ready on time.

- **Authorized Pick-Up People**

- Campers will only be allowed to leave with people you have authorized. Please contact the office to adjust your pick-up authorizations. **Authorized pick-ups will be asked to present photo identification (driver's license or passport).**

What to Wear and Bring

- Wear clothing that can get dirty and wet, and closed-toed shoes with sturdy soles.
- Bring a peanut-free lunch and snacks in reusable containers and a cooler bag (we do not have refrigeration).
- Bring two full water bottles
- Pack in a backpack or duffel - a change of clothes, including a change of close-toed shoes that can get wet (water shoes, rain boots, or old sneakers are great, but no flip flops).
- Bring or wear clothing appropriate for the weather, please send a raincoat if rain is predicted (no umbrellas, please).
- Caregivers may elect to apply an insect repellent and/or sunscreen before the camper arrives at camp.



Please label all items with your child's name. Riverbend is not responsible for lost items.

What NOT to bring:

- Knives or weapons of any kind.
- Electronic devices
- Toys from home
- Money and valuables

Food: Lunch and Snacks

Please pack enough lunch and snacks for your child to sustain an active day. We do not have a refrigerator for camper lunches, so please pack appropriately.

While we are **not a nut free camp**, we encourage families to limit the nut content of lunches and snacks that they bring to Riverbend.

Riverbend encourages families to pack a “low waste lunch” by using reusable containers to decrease the amount of waste produced by our summer camp program. Some possible options:

- A thermos for juice instead of a juice box or pouch.
- An insulated reusable lunch bag instead of a brown paper bag.
- Reusable containers for sandwiches, snacks and other foods.

Food Allergies and Sensitivities:

Generally we are able to make accommodations during mealtimes for campers with food sensitivities or allergies. Please let us know in advance if your camper has allergies or food sensitivities.

Camper Medications

No camper is permitted to carry medication at camp unless the primary caregiver makes a specific, written request.

If your child needs to take medication during the day, please give it to the staff person at drop-off and it will be kept in the School House. The Camp Coordinator will dispense medication to campers when they are scheduled to receive them.

In order for camp staff to administer, medications must be in the original container, clearly labeled with a doctor’s prescription and instructions for use.

Emergency medications including Epi-Pens and Inhalers will be kept by the Camp Coordinator in the office, and will be readily accessible if needed. Please contact Riverbend’s Camp Director if you would rather your child or your child’s counselor carry the medication.

PARENTS, PLEASE BRING MEDICATION TO THE OFFICE SO IT CAN BE KEPT COOL. Do not hand it off to a counselor.

All Riverbend Camp Counselors are trained in First Aid and CPR on an annual basis.

Medical Information:

Please make sure that you have provided Riverbend with all pertinent medical information and emergency contacts for your child. **The medical information was included in your registration form.** To make adjustments to your form please contact the office or access your Active Network account to change information.

Riverbend Behavior Policy

Riverbend’s number one priority is to maintain an inclusive and safe environment for all campers, staff and volunteers. We work to maintain our inclusive environment with the support and participation of our entire camp community.

Riverbend will not tolerate bullying or violent behavior of any kind. If bullying or inappropriate behavior occurs, Riverbend will take the following actions: (1) work with all campers involved to resolve any conflicts by creating a safe space for all campers to speak and be heard (2) contact the parents of campers involved to discuss the situation and any strategies moving forward (3) if

behavior continues, campers will be asked to stay home from camp for one day (4) if behavior continues after a one-day suspension, campers enrollment will be terminated for the rest of the summer without a refund.

Riverbend reserves the right to suspend or terminate the enrollment of any camper without refund if we deem it is in the best interest of the camp and/or the camper.

Caregivers are expected to be respectful, attentive and aware of our camp policies. We encourage families of campers with inclusive needs or who require additional support to speak with our Camp Director in advance.

Please Note: Riverbend's programming requires children to be able to move about the preserve with their camp group. Activities take place outdoors in most types of weather, with the exception of thunderstorms. Campers may be asked to bend, crouch, kneel, sit on the ground, hike on the uneven terrain, play active games with other children, work in teams and engage in conversation with peers and adults. Please let us know in advance if you anticipate that your child will need accommodations during camp based on their medical or behavioral history. Reasonable accommodations will be made to the best of our ability to support camper participation.

Additional Information

Riverbend strives to be a fun and safe place for kids to explore the natural world. While Riverbend conducts regular site safety audits, such as tree and poison ivy management, there is still an inherent risk of injury while exploring the outdoors. Most families choose to send their campers to Riverbend because they acknowledge that the benefits of introducing children to the natural environment outweigh the risks. Please be aware of the following and always consult with your doctor regarding any health questions.

Ticks:

- Ticks are most active April-September, living in grassy and wooded areas.
- Only infected blacklegged ticks, also known as deer ticks, can spread Lyme disease.
- An estimated 20-25% of deer ticks are infected with Lyme disease.
- A tick must bite in order to transmit Lyme disease. The tick must be attached for 24 hours or more before the Lyme disease bacterium can be transmitted.
- Riverbend conducts daily tick checks, however, **we strongly recommend doing a thorough tick check every day when your child gets home.** Check your child's whole body - especially the hair, groin, armpits, ears, and behind the knees.
- Insect repellent may reduce the risk of a tick bite.
- If you find a tick attached to your camper, use fine-tipped tweezers to grasp the tick as close to the skin's surface as possible and pull straight out.
- If Riverbend finds a tick attached to your camper, we will follow the proper removal procedure and will notify you that day.

More information on ticks: <https://www.cdc.gov/ticks/>

Poison Ivy:

- McKaig's Park Ranger routinely checks the property for poison ivy.

- Campers may be exposed through direct contact (direct touch) or indirect contact (touching clothing or other items that have recently been in contact with poison ivy).
- Most campers will experience minor symptoms such as rash, bumps, swelling, or itching that are treatable with basic first aid.
- If a more severe allergic reaction occurs, Riverbend will call the emergency contact numbers provided on the camper's registration form.

More information on poison ivy: <https://www.cdc.gov/niosh/topics/plants/default.html>

Stinging Insects

- Stinging insects like wasps, bees and hornets do live on McKaig's property. We monitor the property daily during the summer for nests and activity. Riverbend does sometimes treat nests that are problematic to kill bees and we keep campers away from areas where a nest has been identified.
- Riverbend staff are trained to recognize the signs of anaphylaxis in the event of a bee sting. If your child exhibits these symptoms we will call 911 and administer an epi pen if they have one.
- Some recommendations to avoid bee stings include wearing light colored clothing and avoiding bright and flowery patterns.

More information about stinging insects:

<https://www.cdc.gov/niosh/topics/insects/beeswasphornets.html>

Hydration:

- Campers need to drink more water when physically active and in hot climates.
- Dehydration can lead to headaches, nausea, fever and more.
- Riverbend requires each camper to bring a water bottle and encourages drinking throughout the day.
- Campers should be drinking plenty of water when they get home to recharge for the next day.
- There is no other beverage that can replace the benefits of drinking pure water.

More information on hydration: <https://www.cdc.gov/niosh/mining/userfiles/works/pdfs/2017-126.pdf>

Day Camp Week-at-a-Glance

	Monday	Tuesday	Wednesday	Thursday	Friday
8:45-9:15 AM	8:45 AM Camper Drop-Off				
9:15 AM	Group Ice Breaker Games	Morning Meeting: Time for songs, games, and stories with everyone in camp.			
9:45 AM					
10:00 AM	Morning Nature Lesson	Morning Nature Lesson	Morning Nature Lesson	Morning Nature Lesson	Morning Nature Lesson
10:30 AM					
11:00 AM					
12:00 NOON	Lunch				
12:30 PM					
1:00 PM					
1:30 PM	Hikes, Games, Crafts, Science Experiments and much, much more!	Afternoon Exploration	Afternoon Exploration	Afternoon Exploration	Afternoon Exploration
2:00 PM					
2:30 PM					
2:45 PM	Farewell Meeting: Campers end each day together, singing songs, hearing stories and playing games.				
3:15-3:45 PM	3:15 PM Camper Pick-Up				

Contact Riverbend

For questions regarding our Summer Camp, please contact: camps@riverbendec.org

About McKaig

McKaig Nature Education Center is dedicated to preserving our 93 acres of parkland and leading programs that ignite appreciation of nature among all ages.

To find out more about McKaig's other programs, please visit their website:
<https://www.enjoymckaig.org/>

About Riverbend

Throughout the year, Riverbend offers a wide variety of programs, including our Year-Round Camps (held during school holidays) and Weekend Family Programs (check the events calendar on the website).

To find out more about Riverbend's other programs, please visit our website:
www.riverbendec.org

Thank you for trusting us with the most important person in your world!

