



Rules for Visiting

Please do not collect any native plants or animals from the preserve.

Dogs are welcome on our trails but must be leashed. All waste must be picked up and disposed of properly.

Picnics are welcome. Please pack out what you pack in.

Smoking, alcohol and drugs are not permitted.

Hours of Operation

Grounds are open daily from dawn to dusk, seven days a week for self-guided tours.

Call 610-527- 5234 or visit riverbendec.org for information on private group programs.

Land Acknowledgment

Riverbend sits within Lenapehoking, the unceded, ancestral homelands of the Lenape people. We strive to follow the Lenape example of stewardship rooted in the understanding that all life on earth is interconnected

Click here to learn more about the history of Riverbend's Preserve.



TRAIL GUIDE

	STRUCTURES	TRAILS DIFFICULTY LEVELS
	PICNIC AREAS	GREEN= Easy/Moderate Grade
	WOODED AREAS	Yellow = More Difficult/Steep or Narrow
	PARKING	Red= Difficult/Very Steep
	RESTROOMS	Riverbend Property Line
		Water/Stream/Ponds
		Stone Walls
		* Off Riverbend Property



02.28.2024

WILDLIFE TO SPOT AT RIVERBEND

Common Trees

Click image for more info.



Slippery Elm



Tulip Tree



Scarlet Oak



Eastern Black Walnut



Black Locust



Red Maple



Sassafras



Sycamore

Common Birds

Click image for more info.

Click here for the Audubon North American Field Guide.



Red-Tailed Hawk



Downy Woodpecker



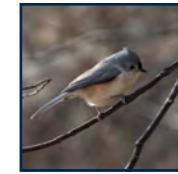
Black-capped Chickadee



American Robin



Tree Swallow



Tufted Titmouse



White-throated Sparrow

Common Reptiles and Amphibians

Click image for more info.



Long-tailed Salamander



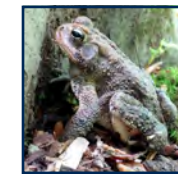
Green Frog



Eastern Milksnake



Eastern Red-backed Salamander



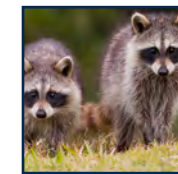
American Toad



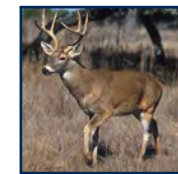
Common Garter Snake

Common Mammals

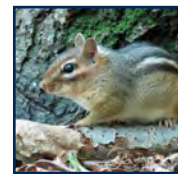
Click image for more info.



Raccoon



White-tailed Deer



Eastern Chipmunk



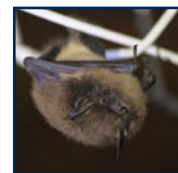
Eastern Grey Squirrel



Eastern America Red Fox



Groundhog



Little Brown Bat

Click here for all image attributions.